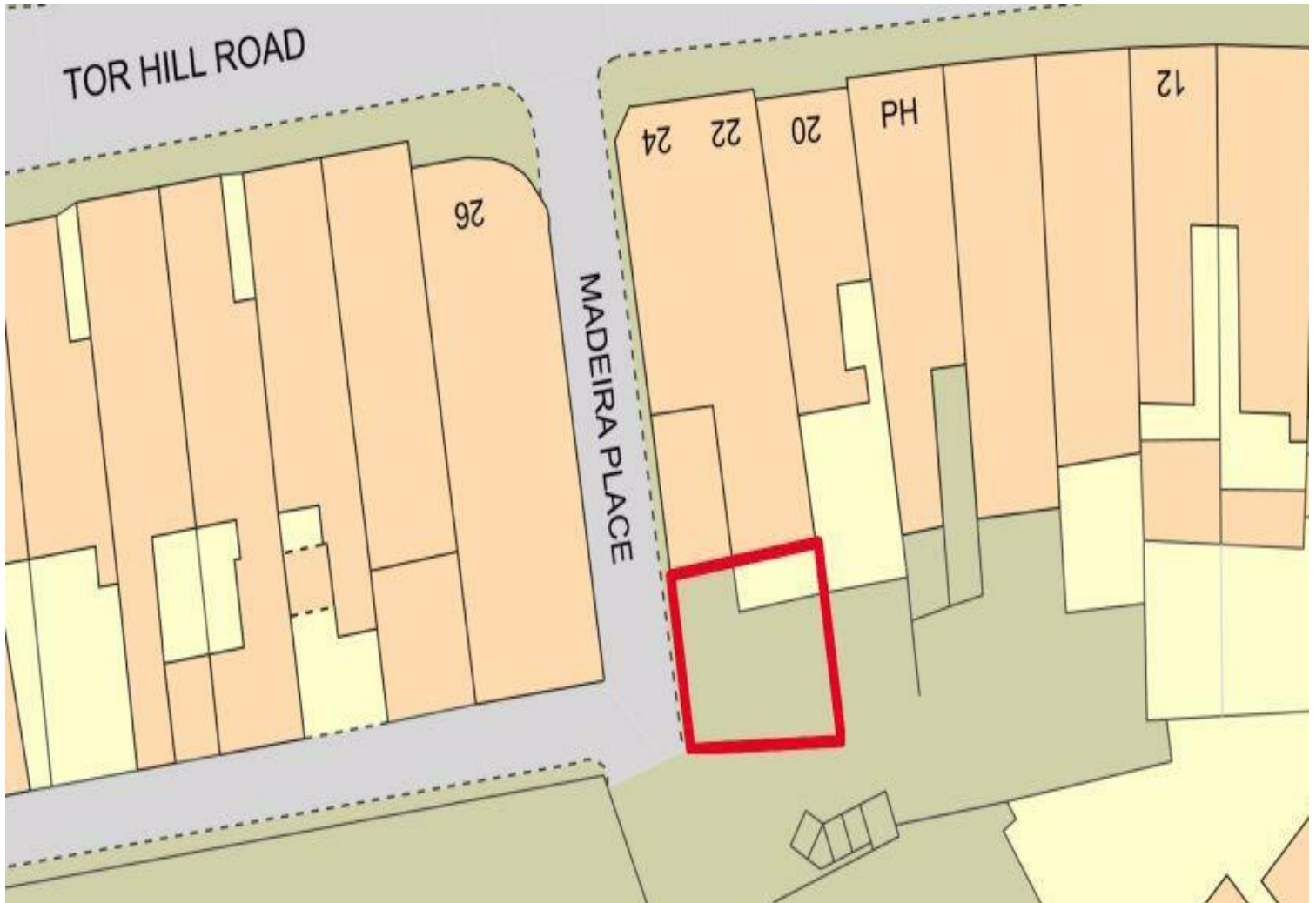


15 Madeira Place

Ref No: 4915

Torquay, Devon, TQ2 5RD



Land with Planning For Single Three-Bedroom Dwelling

Currently Arranged as Three Vacant Parking Spaces

Land Measuring Approximately 87m² (936 sq ft)

Offered with Planning Permission for the Erection of a Three Bedroom House

Smart Design with Private Courtyard, Utility Room and Cycle Store

Offers in the Region of £40,000 Freehold

Interested in this property?

T.01803 21 20 21 [bettesworths.co.uk](https://www.bettesworths.co.uk)



15 Madeira Place

Torquay, Devon, TQ2 5RD

LOCATION

The land is situated on a residential road close to the town centre and its amenities. The open spaces of Upton Park, Tor Abbey and Abbey Sands are all within walking distance.

DESCRIPTION

The land was previously used as parking spaces for local workers in the town and is a plot measuring approximately 87m² (936 sq ft). The land is now benefitting from approved planning for a single three-bedroom dwelling.

The approved dwelling has been well designed, making use of the available space to provide a private courtyard, utility room and cycle/bin store.

The proposed accommodation is arranged as:-

GROUND FLOOR

Entrance lobby, cycle/ bin store, utility room, WC and open plan living/dining/kitchen.

FIRST FLOOR

Three bedrooms and family bathroom.

EXTERNAL

Private courtyard garden area.

PLANNING

Torbay Council granted planning permission under ref: P/2023/0749, on the 12th of January 2024: 'Erection of two storey, three-bed dwelling in place of parking bays', at site of former Cottage (15 Madeira Place) Madeira Place, Torquay, TQ2 5RD.

A copy of the Planning Consent and accompanying approved documents may be downloaded from the Local Planning Authority website.

<https://publicaccess.torbay.gov.uk/view/>

TENURE

Freehold, with vacant possession.

VIEWINGS

The land can be viewed without appointment during daytime hours.

Interested in this property?

T.01803 21 20 21 [bettesworths.co.uk](https://www.bettesworths.co.uk)



Family Business
3 Generations
Since 1943



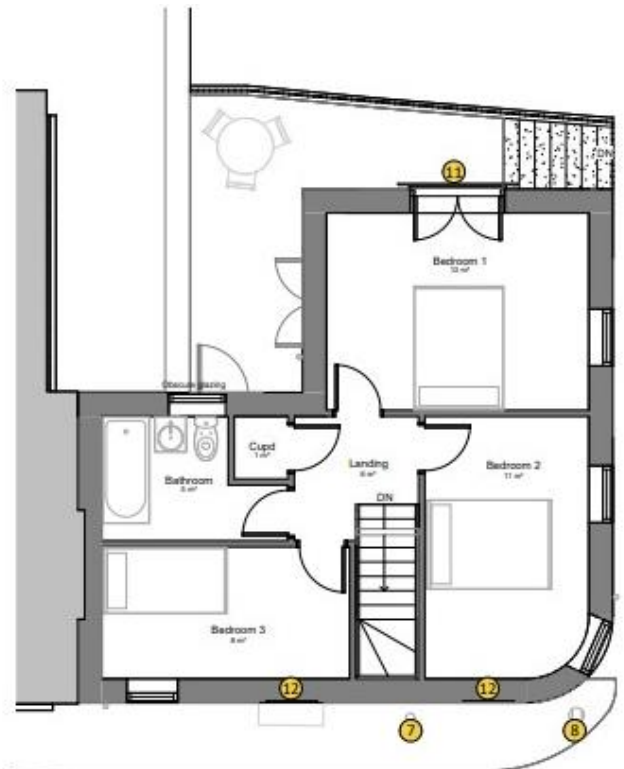
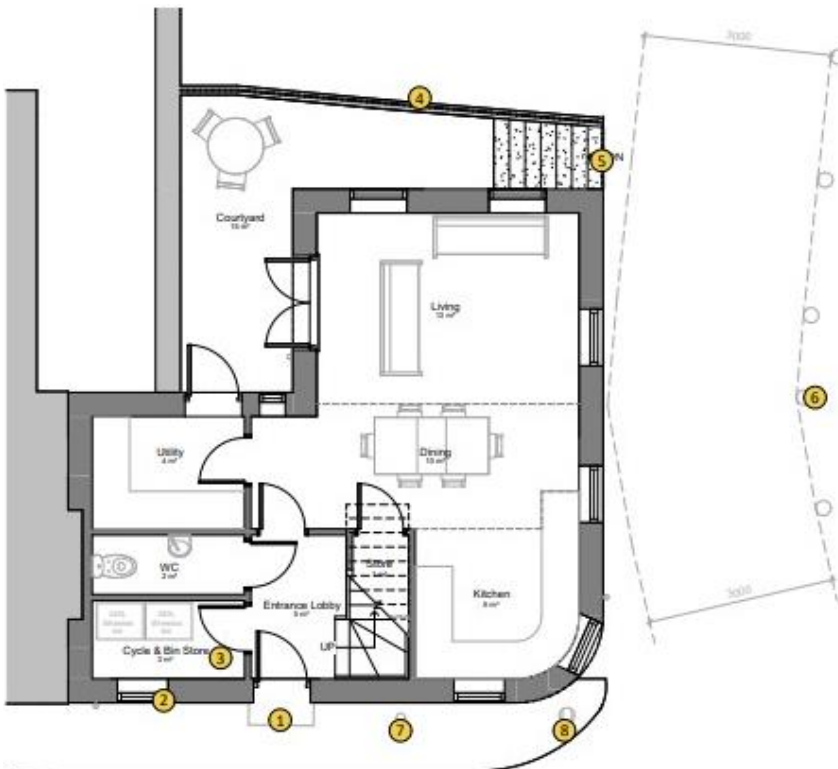
15 Madeira Place

Torquay, Devon, TQ2 5RD

Proposed Front & Rear Exterior



Proposed Internal Layout



Interested in this property?
T.01803 21 20 21 bettesworths.co.uk





15 Madeira Place

Torquay, Devon, TQ2 5RD

This drawing must not be scaled for Construction purposes. Figured dimensions only to be used. Where applicable all dimensions are to be checked on site before any work is put in hand. All dimensions on this drawing are in millimeters unless otherwise stated.



created on **edozo**

Plotted Scale - 1:1,250

Site Location Plan
1 : 1250



Scale 1:1250



Date	Description	Status	Rev
20/07/2023	PLANNING ISSUE	PO	P001
02/08/2023	REVISED PLANNING ISSUE	PO	P002

Project Name	Madeira Place
Sheet Name	Site Location Plan
Sheet No.	09001
Status	PL : PLANNING
Project number	23120
Date	July 2023
Drawn by	TS
Checked by	AP
Scale	1 : 1250 @ A3

www.ccreate-architects.com

www.bettesworths.co.uk
29/30 Fleet Street
Torquay
Devon
TQ1 1BB



IMPORTANT NOTE: Messrs Bettesworths for themselves and for the vendors or lessors of this property whose agents they are give notice that: (i) the particulars are produced in good faith, are set out as a general guide only and do not constitute any part of a contract; (ii) no person in the employment of Messrs Bettesworths has any authority to make or give representation or warranty whatever in relation to this property. The fittings, equipment and services have not been tested by the agents.

Interested in this property?
T.01803 21 20 21 bettesworths.co.uk

